

145.0 mm



HomeElectric
Blender Instruction Manual
T-619



210.0 mm

IMPORTANT SAFETY INSTRUCTIONS

Before using this product, please read all instruction. Please save this instruction manual for future use.

1. This product is intended for household and indoor use only. Do not use this product for commercial use purpose, and do not use outdoor.
2. This appliance can be used by children aged from 8 years and above and persons with reduced physical, sensory or mental capabilities or lack of experience and knowledge if they have been given supervision or instruction concerning use of the appliance in a safe way and understand the hazards involved. Children shall not play with the appliance. Cleaning and user maintenance shall not be made by children without supervision. (EN 60335-1)
3. This product shall not be used by children. Keep this product and its cord out of reach of children.
4. This appliance is not intended for use by persons (including children) with reduced physical, sensory or mental capabilities, or lack of experience and knowledge, unless they have been given supervision or instruction concerning use of the appliance by a person responsible for their safety. Children should be supervised to ensure that they do not play with the appliance. (IEC 60335-1)
5. If the supply cord is damaged, it must be replaced by the manufacturer, its service agent or similarly qualified persons in order to avoid a hazard.
6. Cleaning the appliance please use the dry cloth, do not use water cleaning the motor base, it may cause the potential injury from misuse.
7. The blade accessory is very sharp, please paid attention for handing the sharp cutting blades during cleaning, emptying the bowl and user maintenance.
8. Be careful if hot liquid is poured into the product as it can be ejected out of the appliance due to a sudden steaming.
9. Always switch off the product and disconnect from supply if it is left unattended and before assembling, disassembling, cleaning or approaching parts that move in use.

1

10. Do not immerse the product or allow the supply cord and plug come into contact with water or other liquid.
11. Do not use the product if the blade is curve or damage.
12. Do not operate this product on or near any hot surface (such as gas hob, fireplace, heating appliance)
13. Do not try to remove the blending jar form the motor base during operation.
14. Never operate the product without any liquid in the jar.
15. Never operate the product empty.
16. Never try to defeat the interlock switch mechanism, make sure the accessory is completely installed before operation.
17. Do not overfill the jar.
18. After use the product, always cool down the product before next usage.

Product line graph

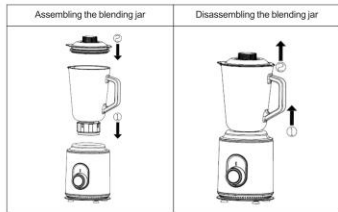


- A. Small Lid
- B. Lid
- C. Glass blending Jar
- D. Motor base
- E. LED
- F. Knob of rotary switch
- G. Grinding cup

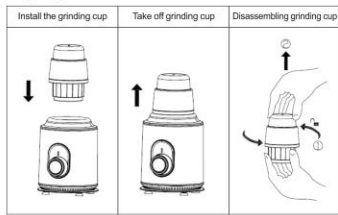
2

Assembling the product

For blender function:



For grinding function:



3

Operation

1. After the product is plugged into the power cord, the LED is always on and the product is in standby state; If the LED light is off, please recheck whether the plug connection is normal.
2. "0" on the knob represents the shutdown status of the product, "1" represents the low-speed, "2" represents the high-speed, and "P" represents the speed is similar to that of "2"; The "P" needs to be held by hand to work.

Recipe

Blender:

1. 2 parts of soft fruit and 3 parts of water (soft fruit only, such as carrot, apple, etc.)
2. Do not exceed max. level mark
3. Operate with highest speed setting for 1 min

Grinder:

1. Put 60g coffee bean into the grinding cup
2. Operated with highest speed setting for 30 seconds.

Cleaning & Maintenance

1. Cleaning the blending jar and grinding cup can use the water, but not chemical agent or other liquid.
2. Cleaning motor base only use the dry cloth, never use wet cloth clean the motor base, or immerse the motor base into water.
3. If the product operating with abnormal noise, or shaking seriously. Please stop use this product, and send back to the service agent to check it. Never repair the product by yourself.

4

Storage

1. After use the product, please repack the product, and store it in a dry place and avoid sun exposure.
2. Make sure the children could not reach the product.
3. Keep the product dry before repack.

Technical ratings

Rated voltage: 220 V - 240 V
Rated frequency: 50 Hz / 60 Hz
Rated power: 550 W
Rated capacity of blending jar: 1.5 L

ENVIRONMENT FRIENDLY DISPOSAL



You can help protect the environment! Please remember to respect the local regulations: hand in the non-working electrical equipments to an appropriate waste disposal center.

5